

**SERICULTURE CRATE STP**  
 OD : 915(L) x 600(B) x 85(H) mm  
 ID : 895 x 575 x 75 mm  
**Options available - SCL, SSP**



**RIBBON CRATE STP**  
 OD : 760(L) x 330(B) x 70(H)mm  
 ID : 725 x 295 x 65mm  
**Options available - SSP**



**SUPER JUMBO CRATE**  
 SCH – 805643  
 (165 Ltrs)  
 OD : 810(L) X 570(B) X 430(H) mm  
 ID : 765 X 525 X 410 mm  
**Options available - SSP, STP**



**JUMBO CRATE DOUBLE WALL**  
 SCH – 654531 (DW)  
 (76 Ltrs)  
 OD : 650 x 450 x 315mm  
 ID : 610 x 410 x 305mm  
**Options available - SCL**



**TOTE BIN WITH LID**  
 OD : 605(L) x 400(B) x 345(H) mm  
 ID : 545 x 370 x 340 mm  
 Bottom : 515 x 333 mm  
**Options available -**  
 Size - 600(L) x 400(B) x 255(H)mm BB, FB  
 Size - 600(L) x 400(B) x 300(H)mm BB, FB  
 Size - 400(L) x 300(B) x 300(H)mm



**NS CRATE SCL**  
 NESTABLE/ STACKABLE CRATE  
 OD : 600(L) x 400(B) x 325(H) mm  
 ID : 565 x 365 x 315mm  
**Options available - SCH, SSP, STP**



**POUCH & PARTITION CRATES**  
 PC : 101  
 OD : 460(L) x 370(B) x 170(H)mm  
 ID : 420 x 335 x 155mm  
 PC : 107  
 OD : 565(L) x 290(B) x 175(H)mm  
 ID : 525 x 220 x 170mm



**BINS**  
 BIN – 50  
 OD – 515(L) x 310(B) x 200(H)mm  
 BIN – 45  
 OD – 350(L) x 211(B) x 200(H)mm  
 Also available Bin 1, Bin 5,  
 Bin 15, Bin 25, Bin 35



**BOTTLE CRATES**  
 PC – 305  
 (24 x 250 – 300 ml)  
 OD : 420 x 280 x 140 mm  
 ID : 405 x 260 x 130 mm  
 Pocket Size : 60 x 60 mm



**CUSTOM BUILT CRATE**



**New Beer Bottle Crate 12 Pkt.**  
 OD : 357(L) x 268(B) x 309(H)mm  
 ID : 335 x 250.5 x 295mm



**MINI-CRATE**  
 SCL – 302010  
 (4 Ltrs)  
 OD : 300(L) x 200(B) x 100(H) mm  
 ID : 265 x 165 x 97 mm



People who know plastics best **THE SUPREME INDUSTRIES LIMITED**

- **Mumbai:** Solitaire Corporate Park, Building No. 11, 6th Floor, Andheri Ghatkopar Link Road, Chakala, Andheri (E), Mumbai-400093. Tel.: 022-4043 0000, 3084 0000, Fax: 022- 4043 0099
- **Noida:** 701, Tower B, World Trade Tower, Plot- C-01, Sector-16, Noida-201301. Tel.: 0120-666 00 00 / 041 / 042 / 043, Fax: 0120-666 00 99
- **Chennai:** No. 36, 11<sup>th</sup> Floor, 1<sup>st</sup> Main Road, C I T Nagar, Nandanam, Chennai-600035. Tel.: 09444077688/044-39811167, Fax: 044-43850498
- **Kolkata:** 601, Central Plaza, 2/6 Sarat Bose Road, Kolkata-700020. Tel.: 033-24858837 / 24858839 / 24858578, Fax: 033-24858838
- **Hyderabad:** 2nd Floor, 3-5-900/1, Opp.Pantaloon Stores, Old MLA Quarters Road, Himayath Nagar, Hyderabad-500029. Tel.: 040-23221160 / 40 / 30
- **Ahmedabad:** S-1, Mahirishi Complex, 2nd Floor, Nr. Sardar Patel Colony, Usmanpura, Ahmedabad. Tel.: 079-27680903 / 27681361, 30028374 / 75 DIRECT), Mobile No: 9825300765, Fax: 079-27680043
- **Bangalore:** 'Solus' ( Jain Heights ), Unit A4 & B4 , 4th Floor, No. 2, 1st Cross, J.C.Road, Bangalore-560002. Tel.: 080-30913704 / 30913709 / 22210711
- **Kanpur:** 311, Annexe, City Centre Mall Road, Kanpur-208001. Telefax: 0512-2332276
- **Pune:** Antariksha Signatures, 2nd Floor, Survey No. 105/1/1/4,Baner, Pune 411 045.Contact : 8805009059

SCAN AND GO TO WEBSITE



www.supreme.co.in

E-mail: info@supreme.co.in

**Supreme**<sup>®</sup>  
 People who know plastics best



STORAGE AND  
 MATERIAL HANDLING  
 SOLUTION  
 MADE EASY !

Storage & Material  
 Handling Crates & Bins

*Handle without care!*

**INDIA'S NO. 1**  
 plastic product company



## QUALITY FROM THE LEADER

Supreme material handling products are among the largest and widest selling brands in India.

Our comprehensive material handling products range comprises of Crates, Pallets and Dustbins.

Our crates covers virtually every size from jumbo to compact, besides offering numerous varieties of speciality crates as well.

As for quality, Supreme crates are manufactured at some of the country's most advanced plants, to the most stringent standards in the industry. We use the best raw materials, performance-enhancing additives and colour pigments, Complemented by computer-designed moulds and state-of-the-art moulding equipment.

Not surprisingly, Supreme crates come packed with powerful features and quality that's second to none tough, lightweight and hygienic, they are also crack, chip and corrosion resistant, space-saving, economical and environment friendly!

Today Supreme Crates are being extensively used in industries as diverse as textiles and aqua culture, electronics and pharmaceuticals, engineering components and processed foods, dairies and distilleries.

## STORAGE & MATERIAL HANDLING CRATES & BINS

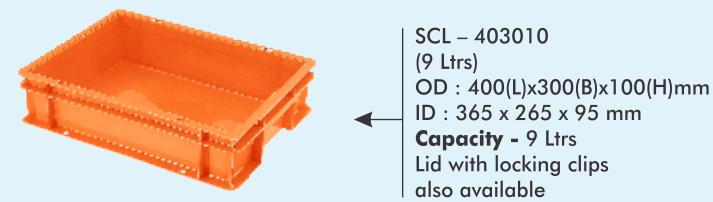
### Supreme advantages

- Superior durability and structural strength
- Can withstand temperatures from -35\* to 75\* C
- Ergonomically designed. Pleasing aesthetics and
- Crack, chip, corrosion and chemical resistant ease of handling
- Hygienic and non-toxic. Resist bacterial and fungal growth.
- Lightweight, convenient and reusable
- Space-saving, Stackable and nestable
- High resistance to environmental stress and
- UV light.

### Abbreviations:

- STP : Supreme Totally Perforated  
 SCL : Supreme Completely closed  
 SFPO : Supreme Front Partially Open  
 SCH : Supreme Completely closed with Handle  
 ID : Inside Dimensions  
 SSP : Supreme side perforated bottom closed  
 OD : Outside Dimensions  
 DW : Double Wall

### 400 X 300 SERIES



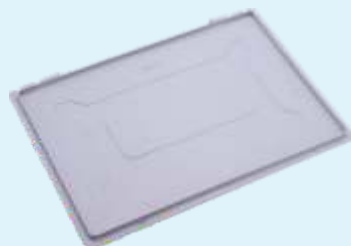
SCL - 403010  
 (9 Ltrs)  
 OD : 400(L)x300(B)x100(H)mm  
 ID : 365 x 265 x 95 mm  
**Capacity - 9 Ltrs**  
 Lid with locking clips also available



SCL - 403015  
 (14 Ltrs)  
 OD : 400 x 300 x 150 mm  
 ID : 365 x 265 x 145 mm  
**Capacity - 14 Ltrs**

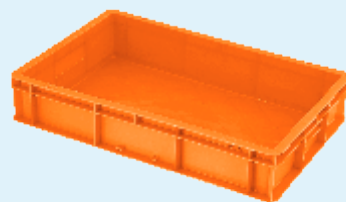


SCL - 403022  
 (20 Ltrs)  
 OD : 400(L) x 300(B) x 220(H) mm  
 ID : 365 x 265 x 215 mm  
**Capacity - 20 Ltrs**



Lids also available for crates of different Series / Sizes

### 500 X 325 SERIES



SCL - 503210  
 (12 Ltrs)  
 OD : 500(L) x 325(B) x 100(H)mm  
 ID : 465 x 290 x 90 mm  
**Capacity - 12 Ltrs**  
**Options available - SCH, SSP, STP**



SCL - 503215  
 (19 Ltrs)  
 OD : 500(L) x 325(B) x 150(H) mm  
 ID : 465 x 290 x 140 mm  
**Capacity - 19 Ltrs**  
**Options available - SCH, SSP, STP**

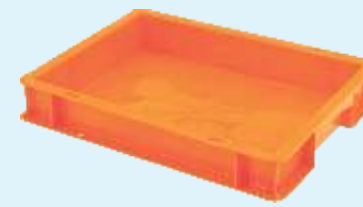


SSP - 503220  
 (26 Ltrs)  
 OD : 500(L) x 325(B) x 220(H) mm  
 ID : 465 x 290 x 215 mm  
**Capacity - 26 Ltrs**  
**Options available - STP, SFPO, SCL, SCH**  
 Lid with locking clips also available



SCL - 503225  
 (32 Ltrs)  
 OD : 500(L) x 325(B) x 250(H) mm  
 ID : 465 x 290 x 240 mm  
**Capacity - 32 Ltrs**  
**Options available - STP, SSP, SFPO, SCH**

### 600 X 400 SERIES



SCL - 604007  
 OD : 600(L) x 400(B) x 75(H)mm  
 ID : 565 x 365 x 70 mm  
**Capacity - 14 Ltrs**  
**Options available - SCH, SSP, STP**



SCL - 604012  
 OD : 600(L) x 400(B) x 125(H) mm  
 ID : 565 x 365 x 120 mm  
**Capacity - 25 Ltrs**  
**Options available - SCH, SSP, STP**



SCL - 604017  
 OD : 600(L) x 400(B) x 175(H) mm  
 ID : 565 x 365 x 170 mm  
**Capacity - 35 Ltrs**  
**Options available - SCH, SSP, STP**



SSP - 604022  
 OD : 600(L) x 400(B) x 220(H) mm  
 ID : 565 x 365 x 215 mm  
 SCH also available  
**Capacity - 45 Ltrs**  
**Options available - SCL, SCH, STP**



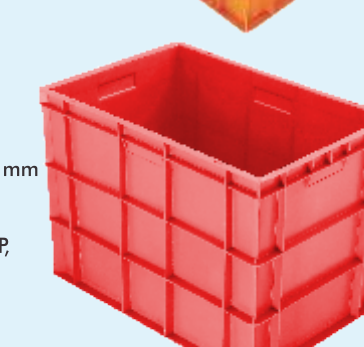
SCL - 604027  
 OD : 600(L) x 400(B) x 275(H) mm  
 ID : 565 x 365 x 270 mm  
**Capacity - 56 Ltrs**  
**Options available - SCL, SSP, STP**



SSP - 604032  
 OD : 600(L) x 400(B) x 325(H) mm  
 ID : 565 x 365 x 315 mm  
**Capacity - 66 Ltrs**  
**Options available - SCH, SSP, STP**



SCL - 604042  
 OD : 600(L) x 400(B) x 425(H) mm  
 ID : 565 x 365 x 420 mm  
**Capacity - (87 Ltrs)**  
**Options available - SCH, SSP, STP**



SSP - 604048  
 OD : 600(L) x 400(B) x 485(H) mm  
 ID : 565 x 365 x 480 mm  
**Capacity - 99 Ltrs**  
**Options available - SCH, SSP, STP**

## FRUIT & VEGETABLE CRATES



PC - 707  
 OD : 540(L) x 360(B) x 292(H) m  
 ID : 510 x 324 x 280 mm  
**Capacity - (48 Ltrs)**



PC - 705  
 OD : 514(L) x 360(B) x 307(H) mm  
 ID : 484 x 330 x 302 mm  
**Capacity - 48 Ltrs**  
**Options available - SCL**



PC - 705  
 OD : 514(L) x 360(B) x 307(H) mm  
 ID : 484 x 330 x 302 mm  
**Capacity - 48 Ltrs**

